



KEATS PLACE, LONDON, N11

£1,900 PCM

Goldman Greg are delighted to offer this one bedroom top floor apartment located on Keats Place in Bounds Green, N11.

The apartment benefits from being finished to a high specification throughout with integrated appliances in the kitchen which is complemented with granite work tops, induction hobs and glass splash backs. There's wooden flooring in the main living areas, modern bathroom and fitted wardrobes to the master bedroom.

Bike storage is also available.

Keats Place is situated within very close-proximity to Bounds Green station and local amenities

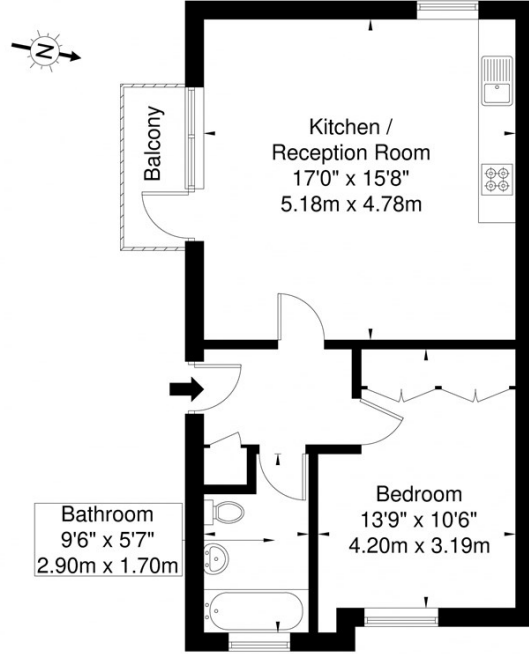
Available from the 20th May 2026, early viewings are highly recommended.



Goldman Greg

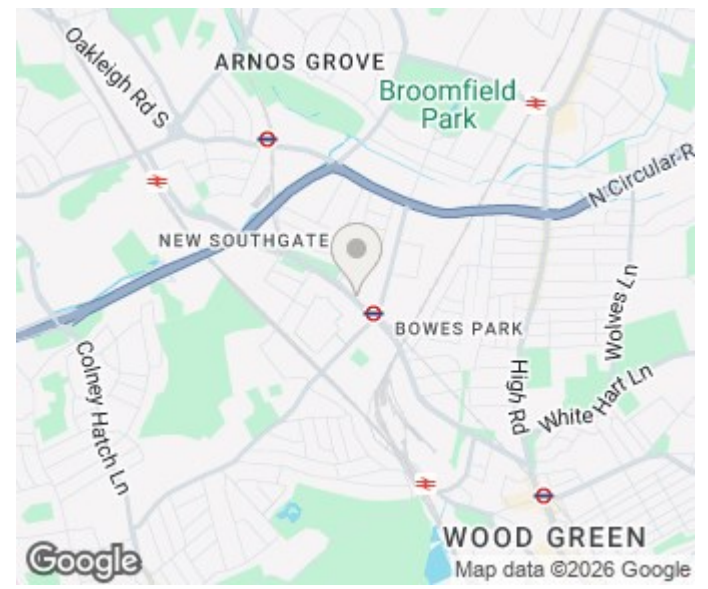
Keats Place, N11 2DT

Approx. Gross Internal Area = 49.1 sq m / 528 sq ft



Second Floor
 Copyright BLEU PLAN

The Floor plan is not to scale and measurements and areas shown are approximate and therefore should be used for illustrative purposes only. The plan has been prepared in accordance with the RICS code of Measuring Practice and whilst we have confidence in the information produced it must not be relied on. If there is any aspect of particular importance, you should carry out or commission your own inspection of the property.
 Copyright @ BLEUPLAN



Energy Efficiency Rating		Current	Potential
Very energy efficient - lower running costs			
(92 plus) A			
(81-91) B		81	81
(69-80) C			
(55-68) D			
(39-54) E			
(21-38) F			
(1-20) G			
Not energy efficient - higher running costs			
England & Wales		EU Directive 2002/91/EC	

Agents Note: Whilst every care has been taken to prepare these particulars, they are for guidance purposes only. All measurements are approximate and are for general guidance purposes only and whilst every care has been taken to ensure their accuracy, they should not be relied upon and potential buyers/tenants are advised to recheck the measurements

Goldman Greg
 143 Leman Street
 London
 E1 8EY

02079770018
 leads@goldmangreg.co.uk
 www.goldmangreg.co.uk

